

# Bruins Down Under - 2005

*At the steps of the Sydney Opera House*



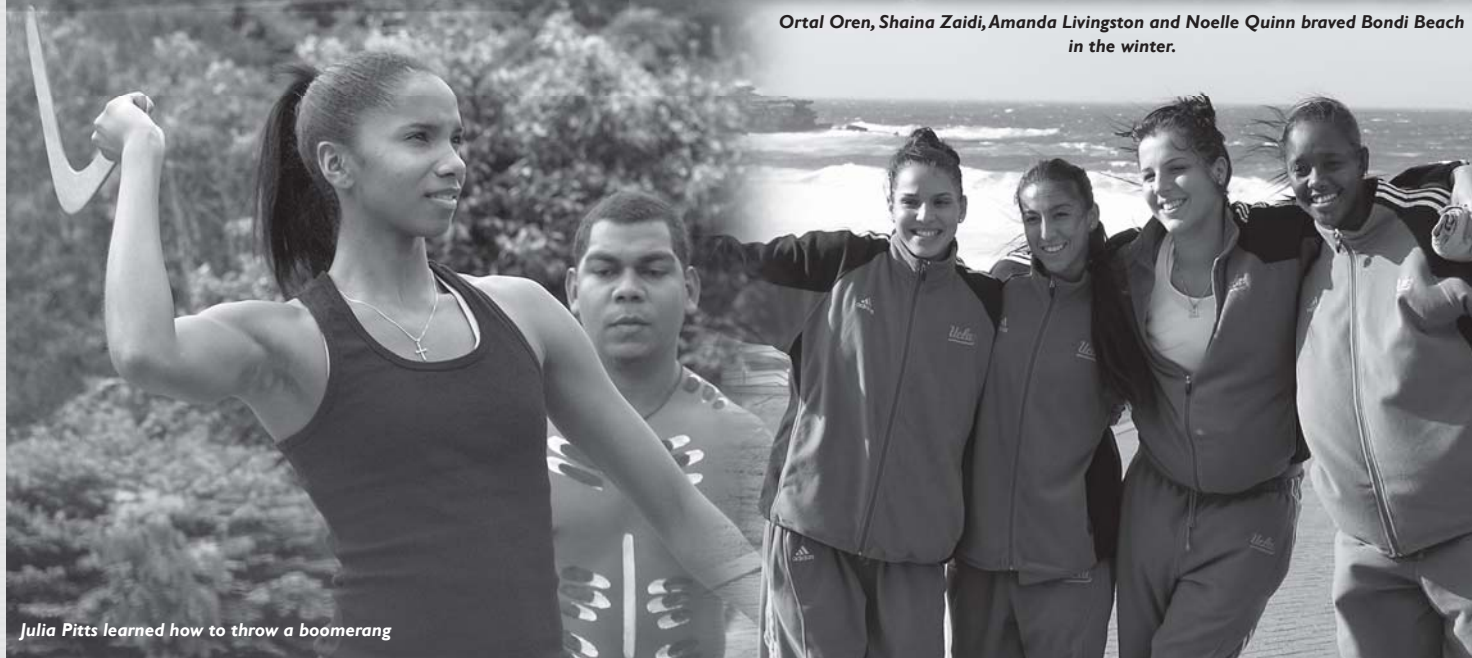
*The Bruins as a team climbed to the top of the Sydney Harbour Bridge*



*The Bruins' first stop in Australia was a scenic view of the Sydney Opera House and the Harbour Bridge.*



*Ortal Oren, Shaina Zaidi, Amanda Livingston and Noelle Quinn braved Bondi Beach in the winter.*



*Julia Pitts learned how to throw a boomerang*

# Follow the Bruins on the Air

Head Coach Kathy Olivier and her UCLA women's basketball team will be featured throughout the season on the UCLA "BruinTalk" Cable Television Show, which is taped twice monthly at Time Warner Cable in Santa Monica. The program, which is hosted by Dave Marcus and Shopa Joshpi, airs weekly from Ventura County to the San Diego area. The show also airs throughout the San Fernando Valley, into the South Bay and parts of Orange County and in Los Angeles on Channel 36. On campus, it airs on a daily basis in the UCLA residence halls.

Fox Sports Net has developed an 18-game regular season Pac-10 schedule which will be shown, live or delayed, in a minimum of 30 million homes. Fox Sports Net has confirmed a live telecast of UCLA's home games vs. Maryland and California, and ESPN2 will air the home game against Washington. Cable station LA Channel 36 will also broadcast selected home games on a delayed basis.

UCLA will also have all games broadcast by the Bruin radio network and on the Internet ([www.uclabruins.com](http://www.uclabruins.com)). In addition, 570am and Sirius satellite radio will broadcast selected games. All post-season games will be broadcast as well.

This is the 30th straight year that UCLA women's athletics events have been broadcast on commercial radio, longer than any other program in the West. Local broadcasters Dave Marcus and Michael Sondheimer will call the action.



UCLA head coach Kathy Olivier is interviewed on the Bruin radio network after each game.

## Pac-10 Television Schedule

Date	Game	Pacific Time
Sun., Nov. 25	California at Baylor (FSN)	Noon
<b>Sun., Nov. 25</b>	<b>Maryland at UCLA (FSN)</b>	<b>2:00 pm</b>
Sun., Dec. 16	Baylor at Stanford (FSN)	2:00 pm
Sun., Dec. 16	Ohio State at Washington (FSN)	4:00 pm
Sat., Dec. 22	Tennessee at Stanford (FSN)	7:30 pm
Sun., Dec. 30	USC at Arizona State (FSN)	12:30 pm
<b>Sun., Jan. 6</b>	<b>California at UCLA (FSN)</b>	<b>12:30 pm</b>
Sun., Jan. 13	USC at Washington (FSN)	3:00 pm
Sat., Jan. 19	California at Arizona (FSN)	1:00 pm
Sun., Jan. 20	Stanford at Arizona State (FSN)	1:00 pm
Sat., Jan. 26	California at Stanford (FSN)	2:00 pm
Sat., Feb. 2	Oregon at Arizona State (FSN)	10:00 am
Sun., Feb. 3	Washington St. at Washington (FSN)	1:00 pm
Sat., Feb. 9	California at Oregon (FSN)	1:00 pm
<b>Sun., Feb. 10</b>	<b>Washington at UCLA (ESPN2)</b>	<b>1:30 pm</b>
Sat., Feb. 16	Arizona State at Stanford (FSN)	1:00 pm
Sat., Feb. 23	Stanford at California (FSN)	1:00 pm
Sun., Feb. 24	Washington at Arizona State (FSN)	11:30 am
Sat., Mar. 1	Wildcard (FSN)	11:00 am
Sun., Mar. 9	Pac-10 Tourn. Semifinal (FSN)	Noon
Sun., Mar. 9	Pac-10 Tourn. Semifinal (FSN)	2:30 pm
Mon., Mar. 10	Pac-10 Tourn. Championship (FSN)	7:30 pm

## The Bruin Radio Network Schedule

Date	Opponent (site)	Air Time*
Thu., Nov. 1	Love and Basketball (Exhib.)	7:00 pm
Wed., Nov. 7	Team Concept (Exhib.)	7:00 pm
Wed., Nov. 14	@ Cal State Northridge	7:00 pm
Sun., Nov. 18	Rice	1:00 pm
Tue., Nov. 20	Cal Poly SLO	7:00 pm
Sun., Nov. 25	Maryland	2:00 pm
Wed., Nov. 28	@ Pepperdine	7:00 pm
Sat., Dec. 1	vs. Idaho St. (@Nevada Tny.)	7:00 pm
Sun., Dec. 2	vs. Southern or Nevada	2/4 pm
Sat., Dec. 8	@ San Diego	2:00 pm
Sat., Dec. 15	@ BYU	3:00 pm
Wed., Dec. 19	Tennessee	7:00 pm
Fri., Dec. 21	UC Riverside	2:00 pm
Fri., Dec. 28	@ Arizona State	5:30 pm
Sun., Dec. 30	@ Arizona	1:00 pm
Fri., Jan. 4	Stanford	7:00 pm
Sun., Jan. 6	California	12:30 pm
Thu., Jan. 10	@ Washington	7:00 pm
Sat., Jan. 12	@ Washington State	2:00 pm
Sat., Jan. 19	@ USC	Noon
Thu., Jan. 24	Oregon	7:00 pm
Sat., Jan. 26	Oregon State	2:00 pm
Thu., Jan. 31	@ California	7:00 pm
Sat., Feb. 2	@ Stanford	2:00 pm
Fri., Feb. 8	Washington State	7:00 pm
Sun., Feb. 10	Washington	1:30 pm
Sun., Feb. 17	USC	1:00 pm
Thu., Feb. 21	@ Oregon State	7:00 pm
Sat., Feb. 23	@ Oregon	2:00 pm
Thu., Feb. 28	Arizona State	7:00 pm
Sat., Mar. 1	Arizona	11:00 am
Mar. 7-10	Pac-10 Tournament	TBA

\* Games will be broadcast on the internet at [www.uclabruins.com](http://www.uclabruins.com). Check the local listings for an over-the-air radio broadcast. Please note that times are subject to change. Times listed are Pacific time. Selected games will be broadcast on 570 am and on Sirius satellite radio.

All post-season games will be broadcast.

### UCLA on the Internet

All of UCLA's radio broadcasts can also be heard on the internet through:

**uclaBruins.com**



# 2007-2008 Pacific-10 Conference Composite Schedule

## November

### Fri., Nov. 9

Arizona at Penn State  
Stanford at Yale  
Portland at Washington State

### Sat., Nov. 10

Washington at Kansas State  
San Jose State at Oregon  
Cal at Fresno State  
Arizona vs. Pittsburgh (at Penn St.)  
Cal Poly SLO at Oregon State

### Sun., Nov. 11

USC at UC Santa Barbara  
Arizona vs. Charlotte (at Penn St.)  
Arizona State at North Carolina  
Stanford at Rutgers

### Mon., Nov. 12

Washington at Gonzaga

### Tue., Nov. 13

Western Oregon at Oregon State  
Santa Clara at Washington State

### Wed., Nov. 14

UCLA at Cal State Northridge  
Washington at Gonzaga

### Thur., Nov. 15

South Dakota State at Oregon  
Cal at UC Riverside

### Fri., Nov. 16

Washington at Hawaii (Hawaii Trny.)  
Portland at Arizona

### Sat., Nov. 17

Washington vs. No. Ariz. (Haw. Trny.)  
St. Louis at Arizona State

### Sun., Nov. 18

Rice at UCLA  
Colorado at USC  
Washington vs. UC Davis (Hawaii Trny.)  
New Mexico at Cal  
Stanford at Utah  
Washington State at Eastern Wash.

### Mon., Nov. 19

Yale at Arizona State

### Tue., Nov. 20

Cal Poly SLO at UCLA  
Marquette at Oregon  
Arizona at NC State

### Wed., Nov. 21

Arizona State at Caribbean Challenge

### Thur., Nov. 22

Arizona State at Caribbean Challenge  
Stanford vs. UConn (Paradise Jam)

### Fri., Nov. 23

USC vs. Virginia Tech (Bahamas Trny.)  
Washington vs. Weber State (UW Trny.)  
Oregon at New Mexico Trny.  
Cal at TCU

Arizona State at Caribbean Challenge  
Oregon State at UNLV Trny.  
Wash. St. vs. NC St. (Bahamas Trny.)

### Sat., Nov. 24

USC at Bahamas Trny.  
Oregon at New Mexico Trny.  
Oregon State at UNLV Trny.  
Stanford vs. ODU (Paradise Jam)  
Washington St. at Bahamas Trny.

### Sun., Nov. 25

Maryland at UCLA  
Washington hosts UW Trny.  
Cal at Baylor  
Stanford at Paradise Jam

### Mon., Nov. 26

Gonzaga at Arizona  
Oregon State at Southern Utah

### Wed., Nov. 28

UCLA at Pepperdine  
Idaho at Washington State  
Loyola Marymount at Cal  
San Francisco at Stanford

### Thur., Nov. 29

Long Beach State at Oregon

### Fri., Nov. 30

USC at Cal St. Fullerton  
St. Mary's at Cal  
Arizona State hosts Classic

## December

### Sat., Dec. 1

UCLA vs. Idaho St. (at Nevada Trny.)  
Cal hosts Classic  
Texas Tech at Washington State

### Sun., Dec. 2

UCLA at Nevada Trny.  
UC Irvine at Washington  
Oregon at Portland  
Vanderbilt at Cal  
Arizona State hosts Classic  
San Francisco at Oregon State  
UC Davis at Stanford

### Mon., Dec. 3

Utah at USC

### Tue., Dec. 4

Pepperdine at Washington

### Thur., Dec. 6

Northern Arizona at Arizona

### Fri., Dec. 7

Washington at Boise State

### Sat., Dec. 8

UCLA at San Diego  
USC at Nebraska  
UC Santa Barb. at Oregon (Portland)  
Cal at Princeton

### Sun., Dec. 9

Arizona at Long Beach State  
UC Davis at Arizona State  
Boise State at Washington State

### Mon., Dec. 10

USC at Michigan  
Cal at Rutgers  
Idaho State at Oregon State

### Wed., Dec. 12

Oregon at Baylor

### Thur., Dec. 13

Arizona State at Texas Tech

### Fri., Dec. 14

Oregon State at Hawaii Trny.

### Sat., Dec. 15

UCLA at BYU  
Pepperdine at USC  
Arizona at New Mexico  
Oregon State at Hawaii Trny.

### Sun., Dec. 16

Ohio State at Washington  
Baylor at Stanford  
San Jose State at Washington State

### Mon., Dec. 17

Fresno State at Arizona State  
Oregon State at Hawaii Trny.

### Tue., Dec. 18

Oregon at Caribbean Classic  
Stanford at New Mexico  
Washington State at Montana

### Wed., Dec. 19

Tennessee at UCLA  
Oregon at Caribbean Classic

### Thur., Dec. 20

Grambling State at USC  
Arizona at UW-Green Bay  
Texas at Arizona State  
Texas Southern at Oregon State

### Fri., Dec. 21

UC Riverside at UCLA  
USC vs. Portland St. / Hawaii  
Purdue at Washington  
Kansas at Cal  
Washington State at Long Beach St.

### Sat., Dec. 22

Tennessee at Stanford

### Fri., Dec. 28

UCLA at Arizona State  
USC at Arizona  
Washington at Cal  
Washington State at Stanford

### Sat., Dec. 29

Oregon at Oregon State

### Sun., Dec. 30

UCLA at Arizona  
USC at Arizona State  
Washington at Stanford  
Washington State at Cal

## January

### Thur., Jan. 3

Arizona State at Oregon  
Arizona at Oregon State

### Fri., Jan. 4

Stanford at UCLA  
Cal at USC

### Sat., Jan. 5

Washington at Washington State  
Arizona at Oregon  
Arizona State at Oregon State

### Sun., Jan. 6

Cal at UCLA  
Stanford at USC

### Thur., Jan. 10

UCLA at Washington  
USC at Washington State  
Oregon at Cal  
Oregon State at Stanford

### Sat., Jan. 12

UCLA at Washington State  
Oregon at Stanford  
Oregon State at Cal  
Arizona State at Arizona

### Sun., Jan. 13

USC at Washington

### Thur., Jan. 17

Washington at Oregon State  
Washington State at Oregon  
Cal at Arizona State  
Stanford at Arizona

### Sat., Jan. 19

UCLA at USC  
Washington at Oregon  
Washington State at Oregon State  
Cal at Arizona

### Sun., Jan. 20

Stanford at Arizona State

### Thur., Jan. 24

Oregon at UCLA  
Oregon State at USC  
Arizona State at Washington  
Arizona at Washington State

### Sat., Jan. 26

Oregon State at UCLA  
Oregon at USC  
Arizona at Washington  
Arizona State at Washington State  
Cal at Stanford

### Thur., Jan. 31

UCLA at Cal  
USC at Stanford  
Oregon at Arizona  
Oregon State at Arizona State

## February

### Sat., Feb. 2

UCLA at Stanford  
USC at Cal  
Oregon at Arizona State  
Oregon State at Arizona

### Sun., Feb. 3

Washington State at Washington

### Tue., Feb. 5

Stanford at Santa Clara

### Thur., Feb. 7

Stanford at Oregon  
Cal at Oregon State

### Fri., Feb. 8

Washington State at UCLA  
Washington at USC

### Sat., Feb. 9

Cal at Oregon  
Stanford at Oregon State  
Arizona at Arizona State

### Sun., Feb. 10

Washington at UCLA  
Washington State at USC

### Thur., Feb. 14

Arizona State at Cal  
Arizona at Stanford

### Fri., Feb. 15

Oregon at Washington  
Oregon State at Washington State

### Sat., Feb. 16

Arizona at Cal  
Arizona State at Stanford

### Sun., Feb. 17

USC at UCLA  
Oregon State at Washington  
Oregon at Washington State

### Thur., Feb. 21

UCLA at Oregon State  
USC at Oregon  
Washington at Arizona  
Washington State at Arizona State

### Sat., Feb. 23

UCLA at Oregon  
USC at Oregon State  
Stanford at Cal  
Washington State at Arizona

### Sun., Feb. 24

Washington at Arizona State

### Thur., Feb. 28

Arizona State at UCLA  
Arizona at USC

### Fri., Feb. 29

Stanford at Washington  
Cal at Washington State

## March

### Sat., Mar. 1

Arizona at UCLA  
Arizona State at USC  
Oregon State at Oregon

### Sun., Mar. 2

Cal at Washington  
Stanford at Washington State

### Pac-10 Tournament (@ San Jose, CA)

### Fri., Mar. 7

Game 1: Seed #7 vs. #10, 6 pm  
Game 2: Seed #8 vs. #9, 8:15 pm

### Sat., Mar. 8

Game 3: Seed #3 vs. #6, 11 am  
Game 4: Winner 7/10 vs. Seed #2, 1:15 pm  
Game 5: Seed #1 vs. Winner 8/9, 5 pm  
Game 6: Seed #4 vs. #5, 7:15 pm

### Sun., Mar. 9

Game 7: Winner Games 3 /4, Noon  
Game 8: Winner Games 5 /6, 2:30

### Mon., Mar. 10

Game 9: Championship, 7:30 p.m.

# Media Information

## UCLA's Primary Media Outlets

### Newspapers

#### Los Angeles Times

202 West First St.  
Los Angeles, CA 90012  
(p)213-237-7145  
(f)213-237-7876

latimes.com

Beat Writer: Lauren Peterson

#### Orange County Register

625 N. Grand Ave.  
Santa Ana, CA 92711  
(p)714-796-7817  
(f)714-565-6765  
ocregister.com

#### Los Angeles Daily News

PO Box 4200  
Woodland Hills, CA 91365  
(p)818-713-3600  
(f)818-713-3436  
dailynews.com  
Beat Writer: Ramona Shelburne

#### Riverside Press-Enterprise

3450 14th St.  
Riverside, CA 92501  
(p)951-368-9533  
(f)951-368-9029  
pe.com

#### South Bay Daily Breeze

5215 Torrance Blvd.  
Torrance, CA 90509  
(p)310-540-4201  
(f)310-540-3067  
dailybreeze.com

#### Long Beach Press-Telegram

604 Pine Ave.  
Long Beach, CA 90844  
(p)562-499-1338  
(f)562-437-8914  
ptconnect.com

#### Pasadena Star-News/ San Gabriel Valley Tribune

1210 N. Azusa Canyon Rd.  
West Covina, CA 91790  
(p)626-962-8811  
(f)626-856-2758  
pasadenastarnews.com  
sgvtribune.com

#### Ventura County Star

550 Camarillo Center Dr.  
Camarillo, CA 93010  
(p)805-437-0277  
(f)805-482-6167  
ventura-countystar.com

#### UCLA Daily Bruin

308 Westwood Plaza  
Los Angeles, CA 90095  
(p)310-825-2095  
(f)310-206-0906  
dailybruin.ucla.edu

### National Newspapers

#### Associated Press

221 So. Figueroa, Suite 300  
Los Angeles, CA 90012  
(p)213-626-1200  
(f)213-346-0200  
ap.org

#### USA Today

10866 Wilshire Blvd. #890  
Los Angeles, CA 90024  
(p)310-882-2400  
(f)310-882-1901  
usatoday.com

### Television Stations

#### CBS2 (Ch. 2)

**KCAL (Ch. 9)**  
4200 Radford Ave.  
Studio City, CA 91604  
(p)818-655-2400

#### NBC4 (Ch. 4)

3000 W. Alameda Ave.  
Burbank, CA 91523  
(p)818-840-4237  
(f)818-840-3076

#### KABC (Ch. 7)

500 Circle Seven Dr.  
Glendale, CA 91201  
(p)818-863-7677  
(f)818-863-7889

#### KTLA (Ch. 5)

5800 Sunset Blvd.  
Hollywood, CA 90028  
(p)323-460-5907  
(f)323-460-5333

#### KTTV (Ch. 11)

**KCOP (Ch. 13)**  
1999 S. Bundy Dr.  
Los Angeles, CA 90025  
(p)310-584-2030  
(f)310-584-2450

#### FSN Prime Ticket

1100 S. Flower St., Suite 2200  
Los Angeles, CA 90015  
(p)213-743-7800  
(f)213-763-4633

#### ESPN

ESPN Plaza  
Bristol, CT 06010  
(p)860-766-2000

### Radio Stations

#### AM 570 KLAC

3400 W. Olive Ave. #550  
Burbank, CA 91505  
(p)818-559-2252  
(f)818-729-2511

#### UCLA Radio Network

c/o Michael Sondheimer  
J.D. Morgan Center  
325 Westwood Plaza  
Los Angeles, CA 90095  
(p)310-825-8699  
(f)310-825-6732  
uclabruins.com



UCLA Radio broadcasters Dave Marcus and Michael Sondheimer

### Press Credentials

Media and photography credentials for UCLA home games may be obtained by working press only by contacting Steve Rourke (srourke@athletics.ucla.edu) or Liza David (ldavid@athletics.ucla.edu) at the UCLA Sports Information Office, PO Box 24044, Los Angeles, CA 90024, (310) 206-6831/Fax (310) 825-8664. All requests should be submitted at least 24 hours in advance. Press credentials may be picked up at lower gate two of Pauley Pavilion.

### Photography

Television and photo credentials entitle video and still photographers to shoot from designated areas along the baselines behind each basket. Photographers will not be permitted to shoot from the stands or near the team bench areas.

### Interview Policies

All interviews must be arranged by the Sports Information Office. Players have been instructed not to grant any interview, in person or by telephone, not arranged by the Sports Information Office. Player telephone numbers are private and will not be released. Please do not expect players to be available if you have not made prior arrangements.

### Interview Availability

Check with the UCLA Sports Information Office regarding the practice schedule. Players are usually available after the practice session. The coach is generally available following practice and by phone, if set up in advance. The best time to reach Head Coach Kathy Olivier in her office is generally Monday-Friday from 10:30am-12 pm on non-game days.

### Postgame Interviews

Postgame interviews of players and coaches shall take place in the designated interview area. All interviews should be requested through UCLA Sports Information staff.

### Pauley Pavilion

Pauley Pavilion is located on the campus of UCLA. From Los Angeles International Airport, take Century Blvd. east to the San Diego Freeway (405). Take the San Diego Freeway north to Wilshire Blvd. East. Turn left on Westwood Blvd. and stop at the parking kiosk. Parking, which costs \$8, is available in Lots 6 or 8, which are adjacent to Pauley Pavilion.

### Travel Information

For security purposes, the UCLA Sports Information Office does not release to the general public any travel information for UCLA athletic teams. If you would like to reach a member of the UCLA women's basketball team on the road, please contact the Sports Information Office.

### Pac-10 Tournament Information

For information on the Pac-10 women's basketball tournament to be held on Mar. 7-10 at the HP Pavilion in San Jose, CA. Please contact the Conference Office for credential information. Assistant Public Relations Director Bri Niemi (bniemi@pac-10.org) is the main contact for women's basketball. The Pac-10 Conference office phone number is (925) 932-4411. Be sure and check out the Conference web site at [www.pac-10.org](http://www.pac-10.org).

### Live Coverage

The UCLA Radio Network will broadcast all games in 2007-08. The live audio can be accessed via UCLA's Official Website, [uclabruins.com](http://uclabruins.com). Providing the play-by-play for the games will be Dave Marcus and Michael Sondheimer. Select games will also have streaming video on [UCLABruins.com](http://UCLABruins.com). Live game statistics via GameTracker will also be available for all home games and select road games. Please check the website for dates and times.

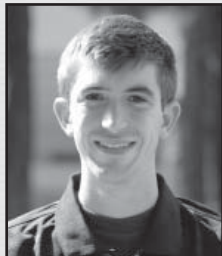
## Women's Basketball Support Staff



Grace Golden  
Staff Athletic Trainer



Paul Yoon  
Student Athletic Trainer



Patrick Green  
Student Athletic Trainer



Karl Jordan  
Strength & Conditioning Coach



Steve Rourke  
Sports Information



Liza David  
Sports Information



Aaron Giacosa  
Academic Counselor



Kenny Donaldson  
Academic Coordinator



# Administrator Biographies



## Dr. Gene Block Chancellor • Stanford '70 • 1st Year

Dr. Gene Block became chancellor of UCLA in summer 2007, taking the helm of a world-class institution comprising 37,000 students and 27,000 faculty and staff, with an annual budget of \$3.6 billion. As chief executive officer, he oversees all aspects of the university's three-part mission of education, research and service.

Previously, Dr. Block served as vice president and provost of the University of Virginia, where he also held the Alumni Council Thomas Jefferson Professorship in Biology. With academic expertise in biological clocks, he conducts research on the neurobiology of circadian rhythms in higher organisms, leading a research lab funded by the National Institutes of Health (NIH). From 1991 to 2002, he directed the National Science Foundation's Science and Technology Center for Biological Timing. In 1997, he was named a fellow of the American Association for the

Advancement of Science. He has invented a number of devices and holds a patent for a non-contact respiratory monitor for the prevention of Sudden Infant Death Syndrome.

Dr. Block joined the faculty of the University of Virginia in 1978 as an assistant professor of biology. He served as vice provost for research from 1993 to 1998 and then as vice president for research and public service until his appointment as vice president and provost in 2001. He also headed an NIH graduate training program aimed at increasing the number of scientists from underrepresented groups. In 1998, he received the Commonwealth of Virginia's Outstanding Public Service Award for his work with Virginia's business community.

A native of Monticello, NY, Dr. Block holds a bachelor's degree in psychology from Stanford University and a master's and Ph.D. in psychology from the University of Oregon. He also completed a postdoctoral fellowship at Stanford, working with the late Colin Pittendrigh, "the father of biological timing" and distinguished biologist and former Stanford President, Donald Kennedy. Dr. Block and his wife, Carol, have two adult children.



## Dan Guerrero Athletic Director • UCLA '74 • 6th Year

In just five years as UCLA's Director of Athletics, Daniel G. Guerrero has boldly placed his imprint on the school's athletic program.

Guerrero, one of the most respected and talented administrators in intercollegiate athletics, has rapidly placed his mark on the program as the director of athletics at UCLA. He is currently serving as the chair of the NCAA's Division I Men's Basketball Academic Enhancement Group. He is also a member of the NCAA Division I Men's Basketball Committee. In June, he was selected 2007 NACDA Division I West Region Athletic Director of the Year.

In his first five years, Guerrero has clearly established a pattern of "image and substance" that few in his profession can match. UCLA stands as the No. 1 University in the nation for NCAA Team Championships (100) won, a

number that continues to grow under his direction. UCLA teams have won 14 NCAA national championships (the highest total in the nation in that span), finished second 12 times and have had an additional 17 Top Five finishes. A staggering 94 teams (of 115 possible) have qualified for NCAA post-season competition, and the football team has appeared in five bowl games. The program has also won 32 conference championships in 14 different sports, produced 286 All-Americans and featured four Honda Award winners, including the 2003-04 Collegiate Woman Athlete of the Year.

This past year, UCLA won an NCAA championship in women's water polo, the school's 100th NCAA team title, and placed second in men's soccer and women's tennis, third in women's golf, tied for third in men's basketball, women's soccer and women's volleyball, fourth in women's gymnastics, fifth in women's outdoor track and field, tied for fifth in men's tennis, seventh in men's golf and women's indoor track and field, ninth in men's outdoor track and field, tied for ninth in baseball and 15th in women's swimming. UCLA played in its fifth straight bowl game in football, placed 14th in the NCAA in women's rowing's varsity eight and won four league titles.

Guerrero, 55, came to UCLA in 2002 from UC Irvine, where he had served as UCI's fifth Director of Athletics for 10 years. Prior to arriving at UC Irvine, he was the Athletic Director for five years at Cal State Dominguez Hills (1988-92). He received his Bachelor's degree from UCLA in 1974 and played second base in the Bruin baseball program for four years. Born on November 10, 1951 in Tucson, AZ, he is married to the former Anne Marie Aniello and they have two daughters: Jenna and Katie.



## Petrina Long Senior Associate Athletic Director/SWA • California '77 • 4th Year

Petrina Long enters her fourth year as senior associate athletic director/senior women's administrator at UCLA, having joined the staff in June of 2004. Long has oversight responsibility for several sports, including women's basketball, men's and women's volleyball, softball and women's gymnastics, as well as several administrative areas, among them academic services, compliance, equity issues, and governmental relations.

Long came to UCLA from UC Irvine, where she served as senior associate athletic director/senior women's administrator since 1993, working closely with Bruin athletic director Dan Guerrero. She also served as interim athletic director following Guerrero's departure to UCLA.

In addition to her UCLA commitments, Long is also extensively involved in a number of areas relating to intercollegiate athletics. She currently holds a chair on the NCAA Academics and Eligibility Cabinet (AEC) Subcommittee on Recruiting, and serves on the NCAA Men's Volleyball Committee. On the conference level, Long is as an administrative liaison to several sports, including women's volleyball, cross-country, track & field, and men's soccer (MPSF). She is also a past chair of the Senior Women's Administrative Committee (SWAC).

During her 11 years at UCI, Long supervised several of the university's 23 sports teams, as well as academic and student support, compliance and sports medicine. In addition, she was active in numerous groups on campus and in the community. Her campus activities included serving on the Chancellor's Advisory Committee on Intercollegiate Athletics (CACIA), and chairing the Diversity Development Program Board for two years. She was a board member of the Irvine Chamber of Commerce for several years and has been a school volunteer in the city of Tustin. Long was a member of the Big West Council and previously chaired the Big West Compliance Committee for two years. She also served on the Executive Committee of both the Big West Conference and the Mountain Pacific Sports Federation.

Prior to her tenure at UCI, Long spent nine years at Columbia University, serving in both the associate and assistant athletic director positions. She was the Assistant Athletic Director for Academic Affairs at Southern Methodist University from 1982-84 and was an advisor for student-athletes at the University of California, Berkeley, from 1979-82.

Long received her B.A. degree in Anthropology from the University of California, Berkeley, in 1977 and her Master's degree in Anthropology from Columbia in 1992. She and her husband, Sam McCamey, have a daughter, Samantha, and two sons, Monte and Traland.

## Key Athletic Department Staff



**Don Morrison**  
Faculty Athletic Rep.



**Michael Sondheimer**  
Asso. A.D., Academic Admissions Svcs.



**Mike Iwamasa**  
Marketing/Promotions



**Ryan Eklund**  
Marketing/Promotions



**Lori Lamar**  
Event Management



**Pete Maglieri**  
Equipment Room



# Meet The Freshmen

**darxia  
morris**

**christina  
nzekwe**

**candice  
brown**

**EARL  
1**

**nina earl**

**UCLA  
34**

**regina  
rogers**

**doreena  
campbell**

**UCLA  
21**





# 2007-08 UCLA WOMEN'S BASKETBALL SCHEDULE

NOV. 1	TEAM CONCEPT (EX.)	7 PM
NOV. 7	LOVE & BASKETBALL (EX.)	7 PM
NOV. 14	@ CAL STATE NORTHRIDGE	7 PM
NOV. 18	RICE	1 PM
NOV. 20	CAL POLY SLO	7 PM
NOV. 25	MARYLAND (TV - FSN)	2 PM
NOV. 28	@ PEPPERDINE	7 PM
DEC. 1-2	@ NUGGET CLASSIC	
DEC. 1	VS. IDAHO STATE	7 PM
DEC. 2	VS. SOUTHERN/NEVADA	TBA
DEC. 8	@ SAN DIEGO	2 PM
DEC. 15	@ BYU	4 PM
DEC. 19	TENNESSEE	7 PM
DEC. 21	UC RIVERSIDE	2 PM
DEC. 28	ARIZONA STATE	6:30 PM
DEC. 30	ARIZONA	2 PM
JAN. 4	STANFORD	7 PM
JAN. 6	CALIFORNIA (TV - FSN)	12:30 PM
JAN. 10	@ WASHINGTON	7 PM
JAN. 12	@ WASHINGTON STATE	2 PM
JAN. 19	@ USC	12 PM
JAN. 24	OREGON	7 PM
JAN. 26	OREGON STATE	2 PM
JAN. 31	@ CALIFORNIA	7 PM
FEB. 2	@ STANFORD	2 PM
FEB. 8	WASHINGTON STATE	7 PM
FEB. 10	WASHINGTON (TV - ESPN2)	1:30 PM
FEB. 17	USC	2 PM
FEB. 21	@ OREGON STATE	7 PM
FEB. 23	@ OREGON	2 PM
FEB. 28	ARIZONA STATE	7 PM
MAR. 1	ARIZONA	11 AM
MAR. 7-10	PAC-10 TOURNAMENT	TBA
MAR. 22-25	NCAA 1ST/2ND ROUNDS	TBA
MAR. 29-	NCAA REGIONALS	TBA
APR. 1		
APR. 6 & 8	NCAA FINAL FOUR	TBA

HOME GAMES AT PAULEY PAVILION INDICATED IN BLUE  
ALL TIMES ARE LOCAL TO SITE



LINDSEY  
PLUIMER  
SR. FORWARD